

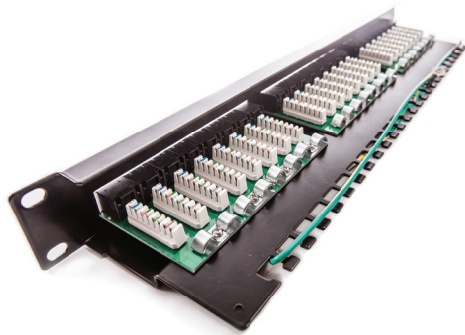
Patch panel KOMPAKT, Category 5E, 24xRJ45/u

P/N: 606030

1
Gigabit

Cat.5E

100
MHz



features

- 110 / LSA termination blocks
- fast and easy installation using 110 or Krone® insertion tool
- enables transmission of all high-speed protocols including 1000BASE-T
- guarantees a bandwidth of 100 MHz
- not shielded against electromagnetic interference
- designed for 19" cabinets
- integrated cable management

application

- primary (Campus), secondary (Riser), tertiary (Horizontal)
- IEEE 802.3: 10Base-T; 100Base-T; 1000Base-T
- IEEE 802.5 16 MB; ISDN; FDDI; ATM



construction

Height	1U (44,5 mm)
Width	19" (482,6 mm)
Depth (including cable management)	99,3 mm
Material	steel
Color	black RAL9005
Surface	structured, matt

mechanical properties

Suitable for cables with solid wires	from 0,51 to 0,64 mm (AWG 24 - AWG 22)
IDC contact material	nickel plated phosphor-bronze alloy
Contact pin material	plated phosphor/bronze alloy
IDC retermination	min. 20
Insertion / extraction cycles RJ45	min. 750

electrical properties

Current rating	1,5A max
Insulation resistance	1000 MΩ max
Dielectric strenght	750V AC, 60Hz 1min
Contact resistance	100 mΩ max

related products

P/N: KEJ-C5E-U-TL	Keystone Jack, Category 5E, RJ45/u
P/N: 601140-UP + KEJ-C5E-U-TL(2)	Modulo50 outlet, Category 5E, 2xRJ45/u
P/N: 601120-UP + KEJ-C5E-U-TL(2)	Modulo45 outlet, Category 5E, 2xRJ45/u
P/N: KE300U24LSOH-RLX	UTP cable 4x2xAWG24, Category 5E, 125 MHz, LSOH
P/N: KEN-C5E-U-xxx	UTP patch cable, Category 5E