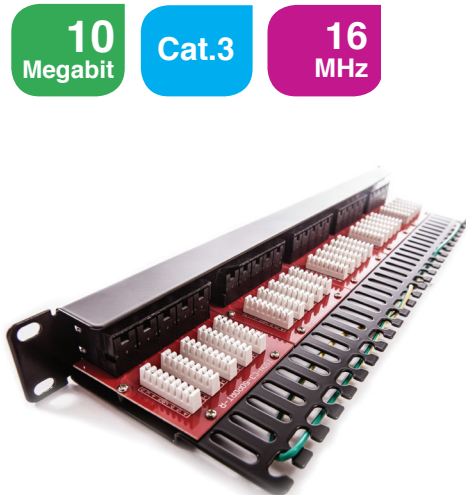


# Patch panel, Category 3, 50xRJ45/u

P/N: 509020



**10**  
Megabit

**Cat.3**

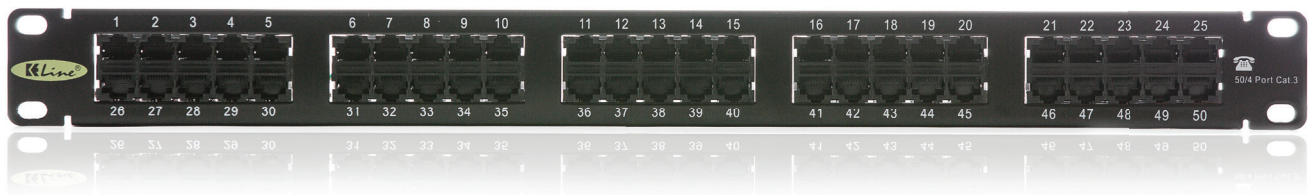
**16**  
MHz

## features

- LSA termination blocks
- fast and easy installation using Krone® insertion tool
- connects voice services from backbone networks into the structured cabling
- enables transmission of all analog and digital voice protocols excluding IP telephony
- guarantees a bandwidth of 16 MHz
- designed for 19" cabinets
- integrated cable management

## application

- primary (Campus), secondary (Riser), tertiary (Horizontal)
- IEEE 802.3: 10Base-T
- ISDN



## construction

Height	1U (44,5 mm)
Width	19" (482,6 mm)
Depth (including cable management)	125 mm
Material	steel
Color	black RAL9005
Surface	structured, matt

## mechanical properties

Suitable for cables with solid wires	from 0,41 to 0,64 mm (AWG 26 - AWG 22)
IDC contact material	nickel plated phosphor-bronze alloy
Contact pin material	plated phosphor/bronze alloy
IDC retermination	min. 20
Insertion / extraction cycles RJ45	min. 750

## electrical properties

Current rating	1,5A max
Insulation resistance	500 MΩ min
Dielectric strenght	750V AC, 60Hz 1min
Contact resistance	100 mΩ max

### related products

P/N: [SYKFY50](#)

Multipair telephone cable SYKFY, 50x2x0,5