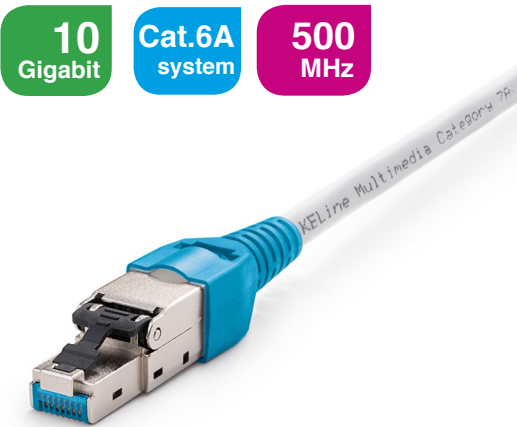


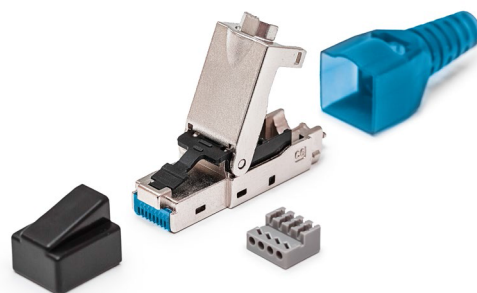
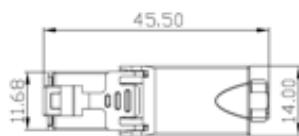
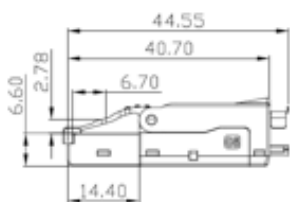
Toolless RJ45/s connector for direct termination on Cat.7_A, Cat.7, Cat.6_A, Cat.6, Cat.5E cables

P/N: KE-FT45-C6AS



features

- direct termination on Cat. 7_A, Cat. 7, Cat.6_A, Cat.6, Cat.5E cables
- tool-free, fast and easy installation
- ideal for IP camera and wireless devices connection without the need of using outlets and patch cords
- enables transmission of all high-speed protocols including 10GBASE-T within the system Cat.6A
- guarantees a bandwidth of 500 MHz within the system Cat.6A
- perfectly shielded against Alien Crosstalk and electromagnetic interference



mechanical properties

Suitable for installing on	cables with solid wires from AWG 26 to AWG 22
	cables with stranded wires from AWG 27 to AWG 22
	cables with outer diameter 6 - 9mm
Housing material	nickel-plated die-cast zinc
Contact pin material	phosphor-bronze alloy coated with 50μ of gold
IDC reterminations	min. 5
Insulation resistance	500MΩ min
Contact resistance	20mΩ max
Current rating	1,5A
Test voltage	1000V DC, 1min
Temperature range	-20°C to +70°C